



To do things Honestly,



**SIGMA METAL INDUSTRIES** W.L.L.

سيجما للأعمال المعدنية ذ.م.م

A Member of:



To treat people Sincerely.



ISO CERTIFIED COMPANY:

ISO 9001:2015  
Quality Management System

ISO 45001:2018  
Occupational Health and  
Safety Management System

ISO 14001:2015  
Environmental Management System



## TABLE OF CONTENTS

TITLE	PAGES
TABLE OF CONTENTS	01
CORPORATE PHILOSOPHY	02
INTRODUCTION	03
TRAFFIC MANAGEMENT	04
TRAFFIC SIGNS	06
GROUND MOUNTED DIRECTIONAL SIGNS	07
GANTRY AND CANTILEVER SIGNS & ITS STRUCTURES	08
WAY FINDING SYSTEMS	09
INTERNAL & EXTERNAL DIRECTORY SIGNS	10
METAL FABRICATIONS	11
STEEL RAILINGS	12
STEEL LADDERS AND STAIRS	12
STEEL SHED STRUCTURES	13
SECURITY AND SAFETY BARRIERS	14
LED PORTABLE VARIABLE MESSAGE SIGNS	15
SOLAR OR MAINS POWERED	
MAJOR PROJECTS	16
OUR CLIENTS	17
CONTACT US	18
LOCATION MAP	18

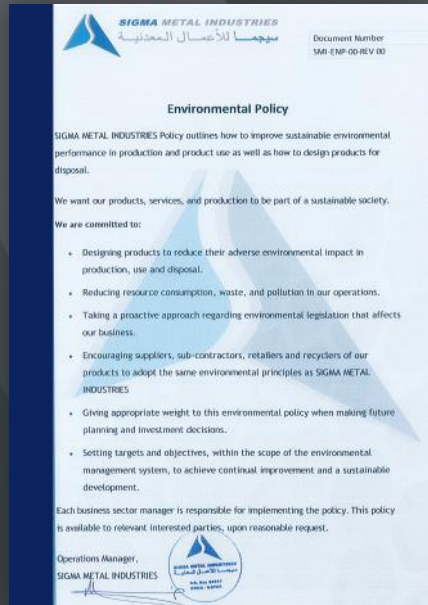




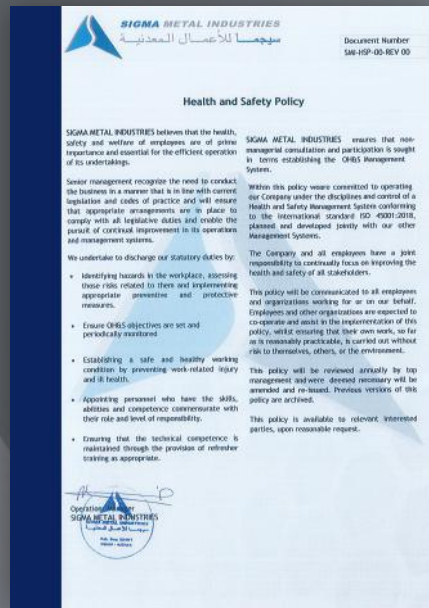
## CORPORATE PHILOSOPHY

Sigma Metal Industries believes in generation of revenues through product differentiation, new technical solutions and economies of scale. Our main concentration is on customer service and satisfaction, continuous modernization of machinery and technical capabilities and in-house training of the company's most valuable assets, and the increase of the market shares in the various markets.

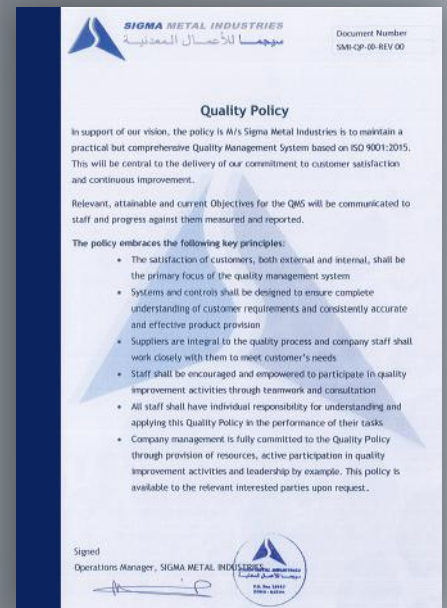
We are not saving any effort to implement and confirm that our service and products which we offer to our valuable clients is (GOOD VALUE OF MONEY).



### ENVIRONMENTAL POLICY

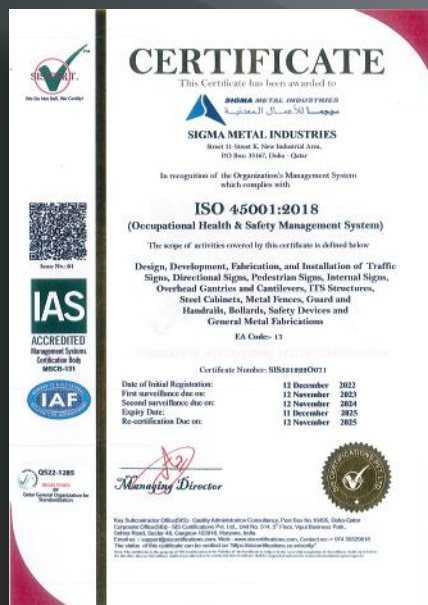


### HEALTH & SAFETY POLICY



### QUALITY POLICY

**Sigma Metal Industries (SMI)** is an ISO 9001:2015 quality management system certified company established in 2008 to manufacture Traffic Signs, Ground Mounted Directional signs, Overhead Gantries and Cantilevers, I T S Structures, Internal and External Way finding Signs and to fabricate steel structures for constructions. The main objective of the company is to introduce new technologies and to give a new meaning to performance, commitment, reliability and quality.



### ISO 45001:2018



### ISO 14001:2015



### ISO 9001:2015





## INTRODUCTION



Sigma Metal Industries (SMI) as a part of Al Sulaiman Holdings is professionally managed by a team of highly qualified experts and dedicated personnel, having significant expertise in their respective spheres of activities.

The different product divisions are run as independent autonomous profit centers. The company has 200 employees and occupies a very great share in the market as it does business substantially to Sigma Metal Industries (SMI) growth and its sustenance.







## TRAFFIC MANAGEMENT

As Traffic Management become a logistic challenge and safety on roads is a must, Sigma Metal Industries (SMI) will be your partner to design and implement the proper traffic solutions for your concerns.

Whether it is static signs or dynamic traffic routing systems, Sigma Metal Industries (SMI) can be expected to develop and implement solutions that fill all the aspects of traffic engineering.



1. Standard Traffic Signs
2. Ground Mounted Directional Signs
3. Overhead Gantries, Cantilever Structures & ITS Structures
4. Truss Gantries
5. Internal & External Way finding Signs
6. LED Portable Variable Message Signs

Other Services: Manufacturing and Fabrication

1. Steel Furniture
2. Steel Gates and Fences / Ornamental Fences
3. Steel Structures
4. Reflective Fleet Markings
5. Security and Safety Barriers
6. Cable Trays
7. Car Park Shades







## TRAFFIC MANAGEMENT

Traffic Safety signage helps in the effective traffic management road safety products are in optimum quality that ensures high durability and resistivity to various unfavorable conditions. Thank road safety products are also available in varied sizes, colors and dimensions to meet the specific requisites of the clients.







## TRAFFIC SIGNS

With traffic volumes increasing over the last decades, many countries have adopted pictorial signs or otherwise simplified and standardized their signs to facilitate international travel where language differences would create barriers are in general to help enhance traffic safety. Such pictorial signs use symbols (often silhouettes) in place of words and are usually based on international protocols.

Traffic signs can be group into several types

1. Danger Warning signs
2. Priority signs
3. Prohibitory or Restrictive signs
4. Mandatory signs
5. Special regulation signs
6. Information, Facilities or Service signs
7. Direction, Position or Indication signs
8. Additional Panels
9. Customized Traffic signs







## GROUND MOUNTED DIRECTIONAL SIGNS

Sigma Metal Industries (SMI) is an authorized 3M converter of reflective materials for traffic signs. With certified and registered suppliers providing a high quality and standard materials.

Using a high technology machines and advanced equipment in fabrication of the traffic signs, gantries, cantilevers and other steel fabrications.

Our signs provide information, guidance and safety while adding value to your roads identification and giving right direction for the public.

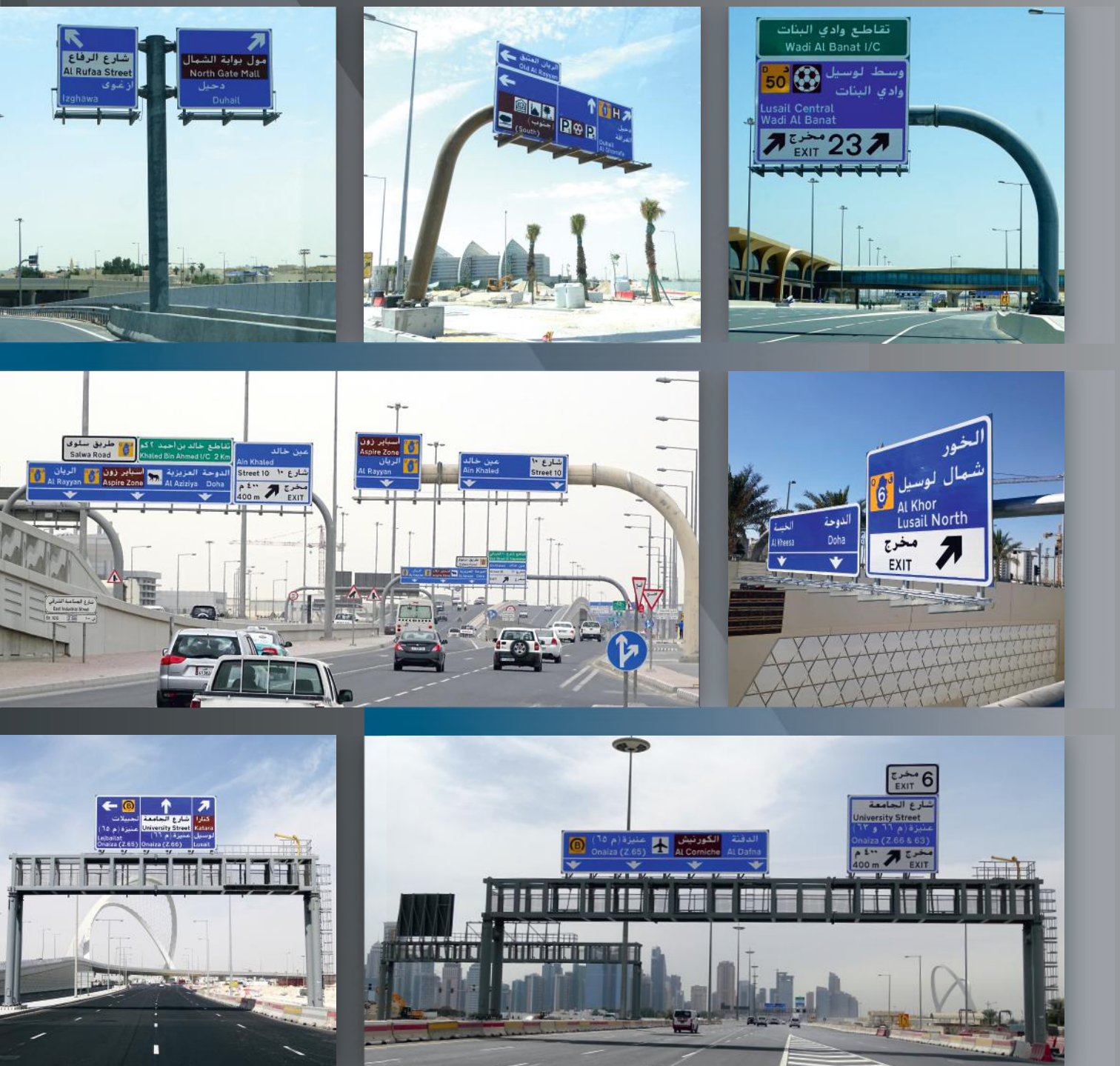






## GANTRY AND CANTILEVER SIGNS & ITS STRUCTURES

Whether it is static signs or dynamic Traffic routing system, Sigma Metal Industries (SMI) can be expected to develop and implement solutions that fill all the aspects of traffic engineering. We have acquired proficiency in manufacturing and supplying an extensive range of overhead gantry, cantilever and ITS signs, which are installed on gantry, cantilever and ITS structure of steel. It provides good visibility in night or low light conditions. We often see these signs on road showing directions, distances between places, slogans, messages or any other important information. High quality of materials and components used, superior workmanship, precision and well-knit cohesive management team have enabled the achievement of a spectacular growth rate in the recent past years. Our exclusive Gantry, Cantilever and ITS Structures are manufactured using superb quality raw materials. The structures are highly durable and ideal to survive any weather conditions. Gantry, Cantilever and ITS structures offered by us are widely used to offer directions and information to the travelers.





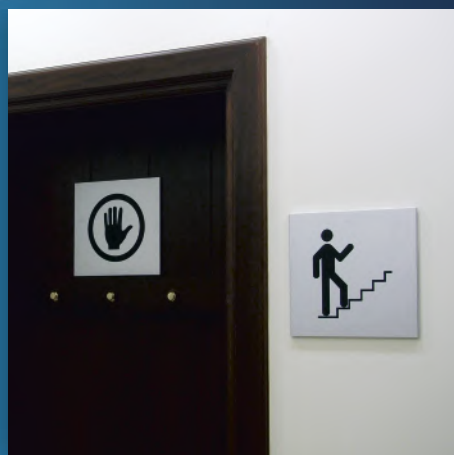
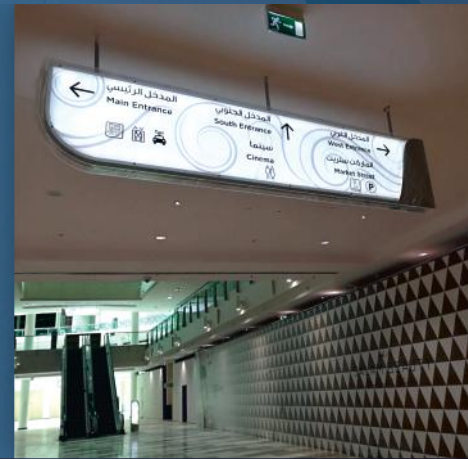


## WAYFINDING SYSTEMS

These keeps you on track...

Sometimes small things enhance your image dramatically. Aesthetically designed way finding signs or directional signs at Sigma Metal Industries (SMI) have way to boost the image to your customers, as you taking care very much even little things too. Indoor way finding sign system vary in different designs and materials to meet client requirements and project specifications.

We offer a wide assortment of way finding signages, useful for escape evacuation route or way finding path. These signages are manufactured using quality material sources from well established vendors of the market. Having these indoor wayfinding signages, it will give a great benefit and convenience for all occupants inside the building by means of locating a specific areas at its exact information of the located area.







## INTERNAL & EXTERNAL DIRECTORY SIGNS

Internal and External Directory signs with modern and conceptual designs, welcomes and orient building users & visitors. It gives clear information. As one of the country's providers of high quality custom directory signs, we partner with well known commercial company around the country to offer a wide range of directory signage that combines modern and elegant design with ease of use.

Whether you need small office directory signs for a building with just a few offices or a larger directory sign to accommodate large number of tenants, we have a directory sign solutions that meets your functional needs while offering the modern of a well designed directory at a competitive prices.







## METAL FABRICATIONS

Sigma Metal Industries (SMI) manufactures a wide range of steel fence and security gate systems as well as railings, sunshades, grills, screens, louvers and perforated metal products.

Sigma Metal Industries (SMI) fence system have been developed to meet the aesthetic demands of modern architecture while addressing growing client concerns about security. These fence systems are manufactured using an exclusive electro-forged welding process, giving complete penetration of the cross member.

The company is changing the image of steel fence systems and security gate systems.







## STEEL RAILINGS

We provide a wide range of railings used in hotels, leisure parks, commercial, corporate and residential buildings. As the name suggests, these railings are manufactured using superior quality mild steel and are available in various elegant designs with matte and gloss finished. These railings are designed to suit the construction requirements and offers beautiful look to the area.



## STEEL LADDERS & STAIRS

Steel ladder with railings known for their accurate and safe designs, avoids the possibility of slipping or cutting. We are one of the efficient organizations in developing exclusive Steel Ladders. We ensure our ranges are machine-tested before they are supplied to the market. The perfect state of the art of these ladder is that it has a capacity of bearing high load and it has tensile strength.







## STEEL SHED STRUCTURES

Sigma Metal Industries (SMI) bring forth a range of premium quality Steel sheds that is fabricated under the strict supervision of our experienced professionals, who have profound knowledge of the industry. Forged from high quality steel & high grade raw materials. Our products have high tensile strength and durable finish standards. Available in varied shapes, sizes and designs. Our steel sheds cater to the varied domestic and industrial requirements. To meet the budgetary constraints of our customers, we offer our product at market leading prices.







## SECURITY & SAFETY BARRIERS

We manufacture these using high grade fabrication materials that add tenacity to our product. Our expert engineers have excellently designed these barriers to ensure high quality and optimum strength to the barriers. Design and quality of these barriers are so perfect that they can withstand the high level impact force which helps in providing better security measures against unauthorized attacks. Our state of the art production unit assist s to deliver fast processing so that we are able to meet large consignment demands in a time bound delivery.



The "BMS2-N2" W-Beam Lateral Barrier is a longitudinal safety barrier totally made in galvanized steel and specifically designed to be installed by post embedding in soil on shoulder of any type of road. The "BMS2-N2" is composed by a continuous horizontal W-beam exposed to traffic and regularly supported by C-Shaped vertical post distributed at each 2 meters. All accessories shall meet the specifications defined in the European standard EN-10.025 (hot rolled products of non alloy structural steels) for grade S235JR with a chemical composition suitable for hot dip galvanization (maximum silicon content is 0.03% and maximum combined Silicon-Phosphorous content (Si+2.5P) is (0.09% in weight) meet to UNE-EN ISO 1460. The "BMS2-N2" characterizes for the junction between rail and post is by mean of breakaway bolt, this is able to brake in way controlled starting from certain level of applied strength.







## LED PORTABLE VARIABLE MESSAGE SIGNS SOLAR OR MAINS POWERED

Variable message signs (VMS) are an integral part of Intelligent Transportation Systems . VMS can be used where greater flexibility is required than can be offered by fixed direction or advisory signs. VMS are used to deliver on road information to drivers in real-time, in order to optimise traffic safety and efficiency.







## MAJOR PROJECTS

1. New Orbital Highway and Truck Route Road Contract 1  
Project Amount: QAR 42,650,300.00  
Client: Joannou & Paraskevaides  
Scope of Works: Monotube Gantries & Truss Structures
2. New Orbital Highway and Truck Route Road Contract 4  
Project Amount: QAR 32,000,000.00  
Client: Daewoo Engineering & Construction  
Scope of Works: Traffic, Directional & Gantry Signs
3. New Orbital Highway and Truck Route Road Contract 2  
Project Amount: QAR 13,000,000.00  
Client: ITS Qatar  
Scope of Works: Directional Signs & Gantry Signs
4. Al Khor Expressway Project  
Project Amount: QAR 28,982,811.00  
Client: Tekfen Construction Qatar  
Scope of Works: Traffic, Directional & Gantry Signs
5. Dukhan Road Project  
Project Amount: QAR 7,816,145.86  
Client: QD-SBG Construction  
Scope of Works: Traffic, Directional & Gantry Signs
6. Duhail Intersecrtion and Al Gharrafa Street  
Project Amount: QAR 5,108,532.99  
Client: UCC Infraroad Yuksel JV Co.  
Scope of Works: Traffic Signs and Gantries
7. Roads and Infrastructure in Doha Industrial Area - Pkg.7  
Project Amount: QAR 7,950,002.92  
Client: Qatar Building Company  
Scope of Works: Truss Gantry Instructure
8. CP21A1-Manufacture and Installation of Vehicular and Pedestrian Signages  
Project Amount: QAR 37,476,212.20  
Client: Lusail Real Estate Development Company  
Scope of Works: Directional Signs and Wayfinding Signages
9. Maintenance, Supply and Installation of Street Names and Directional Signs throughout Qatar-Contract 2  
Project Amount: QAR 10,367,500.00  
Client: Public Works Authority (Ashghal)  
Scope of Works: Directional Signs







## OUR CLIENTS







## CONTACT US:

Location: Corner Street K - Street 11 New Industrial Area, P. O. Box No. 33167, Doha - Qatar

Tel No.: +974 4460 0994 +974 4460 0993

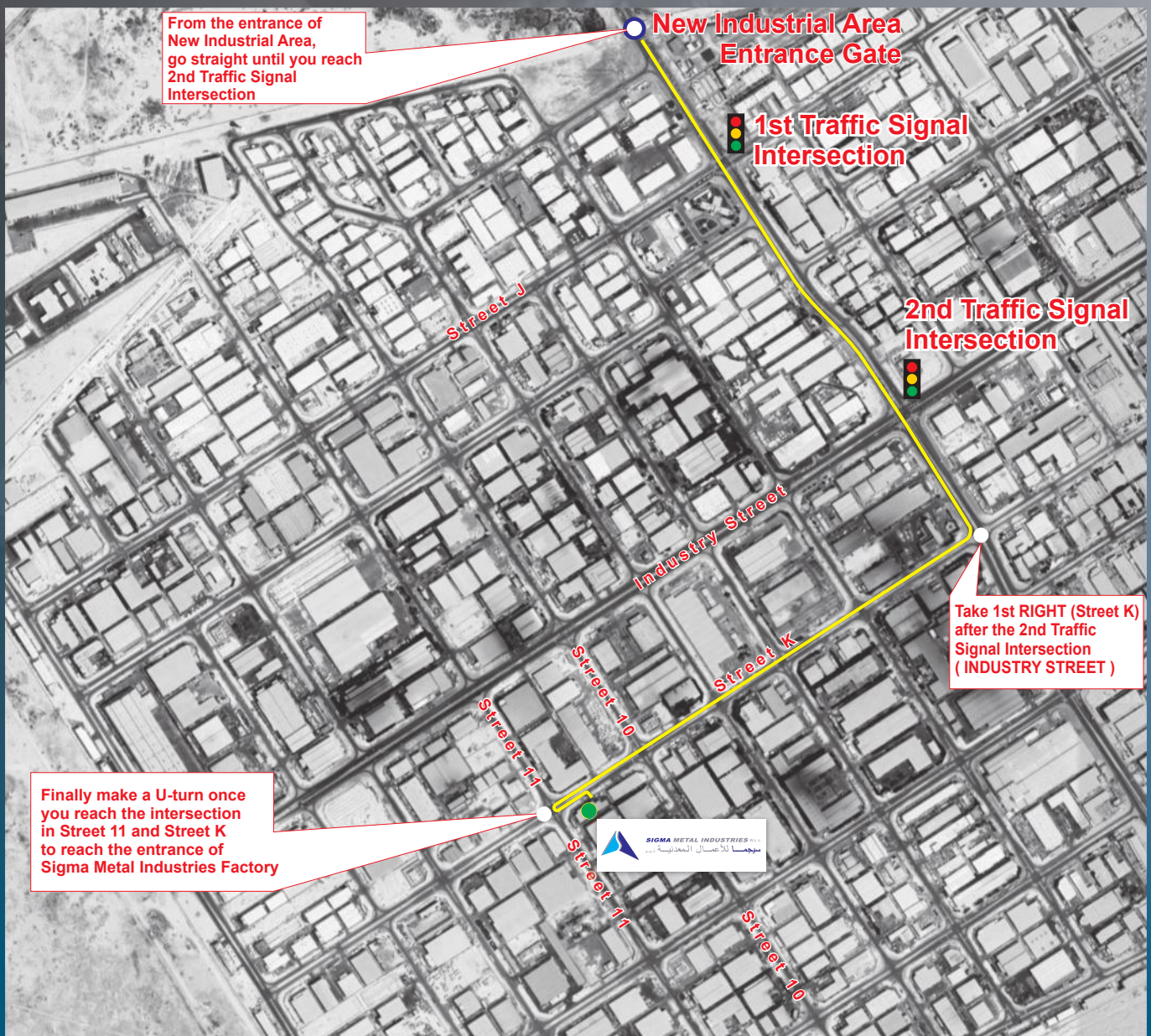
Fax No.: +974 4460 0995

Email address: info@sigma-industries.com

Website: www.sigma-industries.com

Facebook Page: @sigmametalindustries

## LOCATION MAP





Copyright © 2023



**SIGMA METAL INDUSTRIES** WLL

سيجما للأعمال المعدنية ذ.م.م

w w w . s i g m a - i n d u s t r i e s . c o m